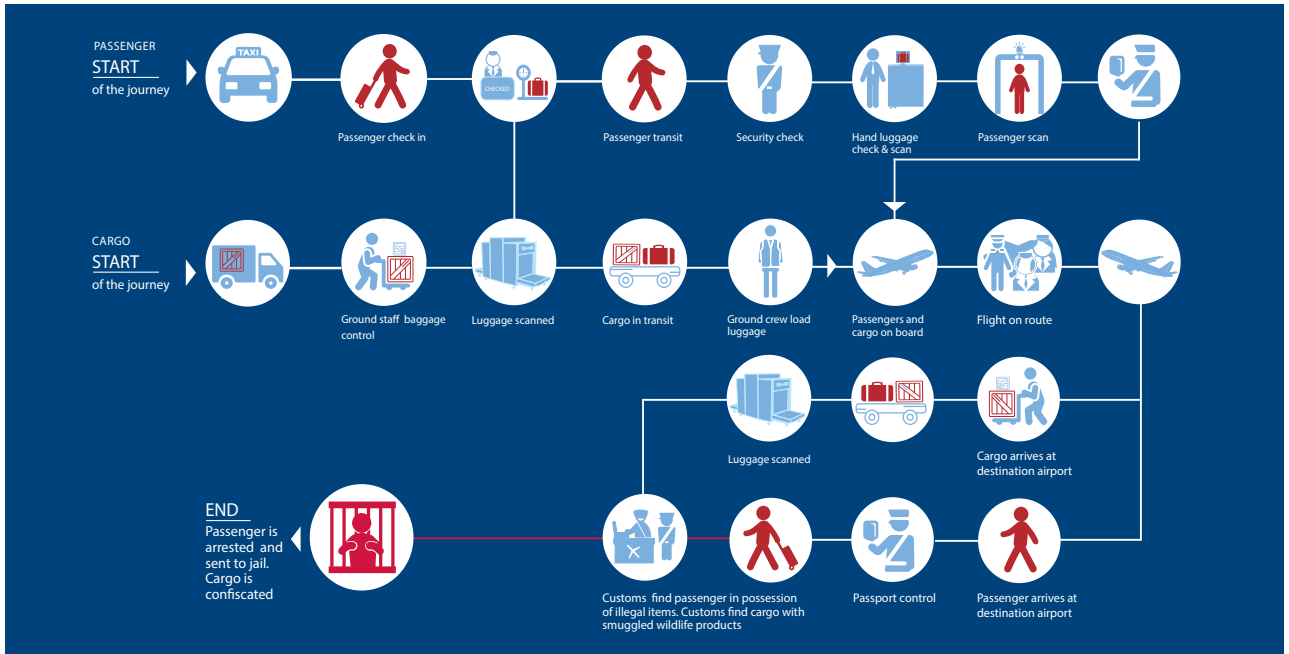


ON THE TRAIL OF THE TRAFFICKER

TRAFFICKERS MOVING THROUGH AIRPORTS PRESENT MULTIPLE OPPORTUNITIES FOR DETECTION, ACROSS DIFFERENT DEPARTMENTS.
(Follow the trafficker and smuggled items in red.)



WHAT ARE SOME COMMON INDICATORS?



Inappropriate Attire

- Inappropriate Clothing
- Wrong clothes for the climate
- Large, baggy coats
- Clothes do not match the occupation



Involuntary Responses

- Sweating, dilated pupils
- Avoids making eye contact
- Nervousness
- Shaking & twitching



Nervous Body Movements/ Speech

- Adjusts clothing/jewelry
- Talks very fast
- Delayed response to questions
- Repeats the question



Use Your Senses

- Odd smells
- Animal sounds/noises
- Moving clothing



CHECK IN STAFF

Route and connections do not make sense
Baggage smells odd



IMMIGRATION

Abnormal travel shown by recent multiple visas for certain countries for very short trips
Nervous passenger



FLIGHT CREW

Passenger does not eat or leave their seat
Passenger seems nervous
Passenger smells odd
Passenger is wearing large clothing and keeps it on during the flight



SECURITY

Clothes are too big
Wrong clothes for the climate
Multiple connection boarding passes



CARGO HANDLER

Cargo origin does not match declared contents (eg. bananas from Canada)
Cargo container has air holes when it shouldn't



CUSTOMS

Act on tip offs from airline staff
Watch for known wildlife smuggling routes
Frequent checks
Check the person and small bags



X-RAY TECH

Baggage smells odd
Scan shows orange (organic materials - possibly wildlife) or green item (possibly ivory)



GROUND STAFF

Baggage is moving
Baggage has an odd smell
Baggage makes a noise
Baggage has odd/multiple connection tags

